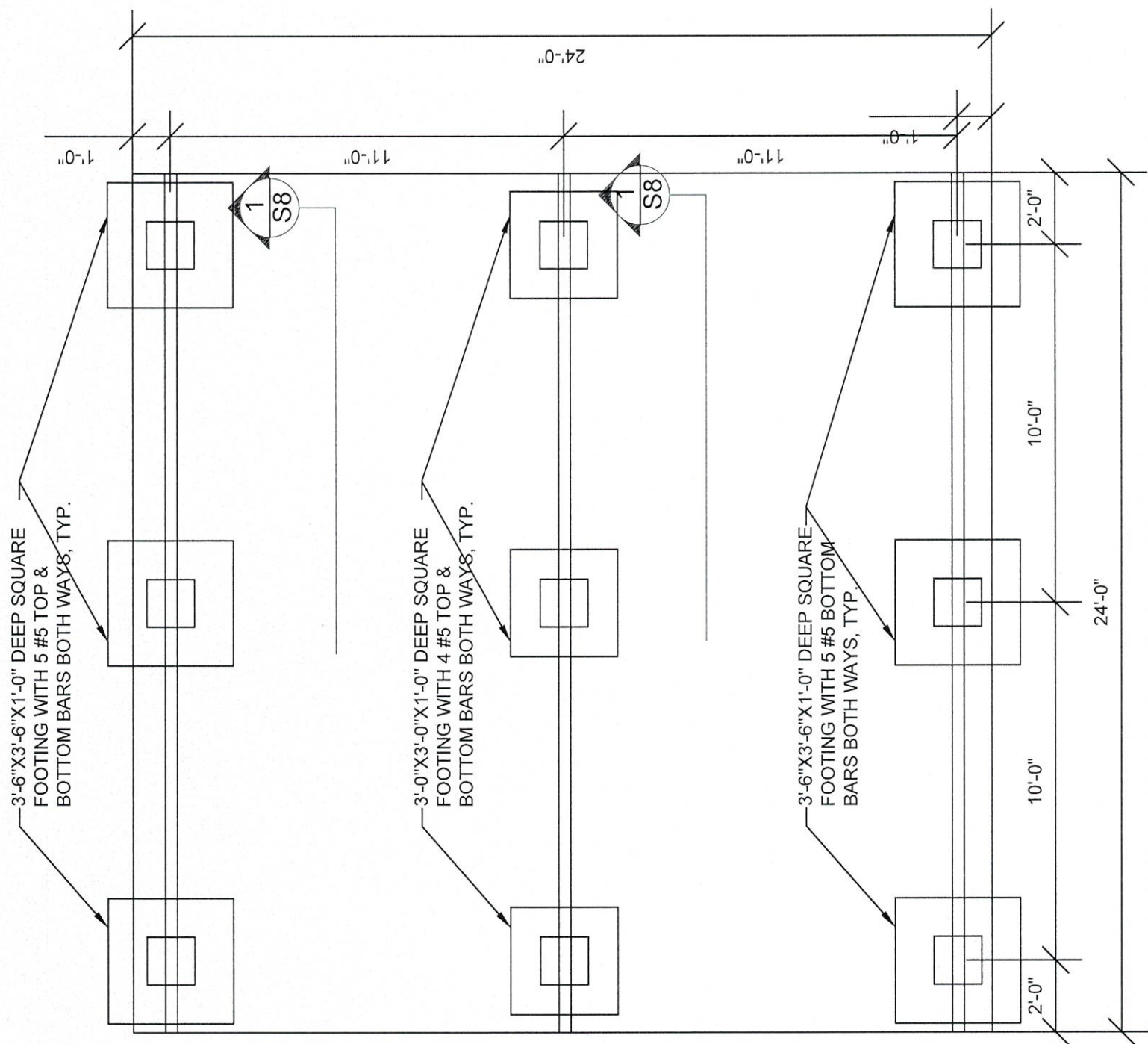




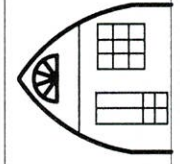
PSE Consulting Engineers, Inc.
 www.structure1.com
 Klamath Falls Office
 250 Main
 Klamath Falls, Oregon
 97603
 Phone: (541) 850-6300
 Fax: (541) 850-6233
 EInfo@structure1.com
 8761 Perimeter Park Blvd
 Suite 105, Jacksonville, FL
 (904) 374-5755, 5784
PROJECT #:
 Arched Cabin 221-802



Structural members only were included in this structural review/design. Non-structural members are NOT included.



1 FOUNDATION PLAN
 DO NOT SCALE DRAWING



ARCHED CABINS
 11834 DULA LANE
 CYPRESS, TX 77429
 TEL: 1-832-930-ARCH

24' X 24'
FOUNDATION PLAN

THE INFORMATION CONTAINED IN THIS DRAWING IS THE SOLE PROPERTY OF ARCHED CABINS. ANY REPRODUCTION IN PART OR WHOLE WITHOUT THE WRITTEN PERMISSION OF ARCHED CABINS IS PROHIBITED.

BY	DATE
N.P.	25-SEP-2018
DRAWN	
CHECKED	
APPROVED	

UNLESS OTHERWISE SPECIFIED STANDARD TOLERANCING
 DECIMAL TOLERANCE
 X ± 1mm
 XX ± 0.5mm
 XXX ± 0.10mm
 ANGULAR ± 0.5°
 GEOMETRIC TOLERANCING:
 ◎ // ⊥ WITHIN 0.2 T.I.R.

CAD GENERATED DO NOT MANUALLY UPDATE OR SCALE	PROJECTION
UNITS	WEIGHT
in	N/A lbs
FINISH	N/A

MATERIAL
SEE PART DRAWINGS

DWG. NO.	SCALE	SHEET SIZE	SHEET
A-101-02	NTS		S8

INFORMATION CONTAINED IN THIS DRAWING IS CONFIDENTIAL AND PROPERTY OF ARCHED CABINS. ANY REPRODUCTION IN PART OR AS A WHOLE WITHOUT WRITTEN PERMISSION OF ARCHED CABINS IS PROHIBITED.

FLOOR JOIST CONNECTION
WELDED TO BEAM, 16" O.C.

W6X9 OR EQUAL

BEAM TO
PLATE

16" $\frac{1}{4}$ "

16"x16"x $\frac{1}{2}$ " THICK STEEL PLATE
W/ (4) $\frac{3}{4}$ " \varnothing STUDS WELDED TO
PLATE. MIN. EMBED. = 12"

4 #5 VERTICAL BARS, TYP.

REINFORCEMENT PER
FOUNDATION PLAN

1'-6" MAX

#3 HORIZ TIES @ 8"
O.C. MIN 3, TYP.

GRADE

PER
FOUNDATION
PLAN

PER
FOUNDATION
PLAN

NOT TO EXCEED 10'-0"



Consulting
Engineers,
Inc.

www.pse.com
Klamath Falls Office
250 Main
97603
Phone: (541) 866-6300
Fax: (541) 866-6301
Email: info@pse.com
8751 Perimeter Park Blvd
Suite 103, Jacksonville, FL
Phone:
(904) 374-9755, 9784

PROJECT #:
Arched Cabin 221-802



Structural members only were included in
this structural review/design. Non-structural
members are NOT included.

UNLESS OTHERWISE SPECIFIED STANDARD
TOLERANCING
DECIMAL TOLERANCE
X .1mm
XX ± 0.5 mm
XXX ± 0.10 mm
ANGULAR $\pm 0.5^\circ$
GEOMETRIC TOLERANCING:
 \odot // \perp WITHIN 0.2 T.I.R.

THE INFORMATION CONTAINED IN
THIS DRAWING IS THE SOLE
PROPERTY OF ARCHED CABINS.
ANY REPRODUCTION IN PART OR
WHOLE WITHOUT THE WRITTEN
PERMISSION OF ARCHED CABINS
IS PROHIBITED.

DRAWN	BY	DATE
CHECKED	SY	
APPROVED		
MATERIAL		

TITLE

BEAM & PIER
LAYOUT DETAIL

DWG. NO.

REV.

01

THE INFORMATION CONTAINED IN THIS DRAWING IS CONFIDENTIAL AND
PROPRIETARY OF ARCHED CABINS. ANY REPRODUCTION IN PART OR AS
A WHOLE WITHOUT WRITTEN PERMISSION OF ARCHED CABINS IS
PROHIBITED.

UNITS
in

WEIGHT
N/A lbs

FINISH
N/A

SCALE

SHEET SIZE
B

SHEET
S9

ARCHED CABINS
11834 DUJALA LANE
CYPRESS, TX 77429
TEL: 1-832-930-ARCH